



HOUSE OF HANCET  
— LUXE —

Spaces defined by *intent*.  
Delivered with *precision*.

*A private brochure of singular homes, curated interiors,  
and the house behind them.*

ARCHITECTURE · INTERIORS · ATELIER

THE PARENT HOUSE

## House of Hancet 108

*“We create spaces that are not just seen,  
but felt.”*

HOUSE OF HANCET 108 · WHERE VISION MEETS HOME



— A WORD FROM THE HOUSE —

# Not a company. *A curated universe* of luxury creation.

House of Hancet 108 is an **ecosystem of design, execution, and innovation** — where ideas are imagined, designed, engineered, and executed with precision. Built on a vision to redefine how spaces are experienced.

A seamless, design-led ecosystem of multiple verticals. Independent identities. One unified philosophy. **HOH Luxe** is our high-end residential wing — where architecture, construction and interiors are held by a single team, from the first sketch to the final reveal.

— Hancet Globe Pvt. Ltd.

— OUR PHILOSOPHY —

# Design *intent* that survives the journey to *delivery*.

*Luxury, at HOH Luxe, is not ornament. It is precision in detail, intelligence in material, control over execution, and the elevated experience of a single team carrying the vision from first sketch to final reveal.*

## HOH Luxe

FROM THE HOUSE OF HANCET 108 CODEX

## ◆ THE FOUR PILLARS ◆

**I.**

## ARCHITECTURE FIRST

The architecture sets the intent; the interior speaks it back. Bones before rooms.

**II.**

## TIMELESS, NOT TRENDY

We design for the next thirty years, not the next photograph.

**III.**

## MATERIAL LED

Materials chosen for their honesty, performance, and ageing — not their finish sheet.

**IV.**

## DETAIL DEFINED

A house is the sum of its junctions. We resolve every one on paper, first.

*Vertical 01*

# Architecture

*Exterior Plus*

A next-generation construction practice. End-to-end expertise across residential and commercial projects — design-aware execution balancing engineering rigour with aesthetic intelligence. Site, climate and life studied as one; every façade, junction and detail resolved before site begins.

---

 PRE-CONSTRUCTION & APPROVALS

---

 CONSTRUCTION EXECUTION

---

 MEP & TECHNICAL SERVICES

---

 MATERIAL & VENDOR COORDINATION

---

 CULTURAL & HERITAGE ARCHITECTURE

---

 SUSTAINABLE & BIOPHILIC DESIGN
*Vertical 02*

# Interiors

*Interior Plus*

A design-led interior practice. Concept-driven environments where function and aesthetics align. Globally informed, contextually executed — space, joinery, lighting, soft furnishing and styling under one roof. Every junction detailed; every finish mocked-up before site.

---

 SPATIAL PLANNING & CONCEPT

---

 JOINERY & CABINETS

---

 INTEGRATED LIGHTING DESIGN

---

 CUSTOM FURNITURE & SOFT GOODS

---

 MATERIAL SPECIFICATION

---

 STYLING, ART & HANDOVER

EXTERIOR PLUS · DESIGN VOCABULARY

# Ten ways a home can *belong*.

Every HOH Luxe commission begins as a question: what kind of house does this site, this climate, and this family ask for? We work fluently across ten architectural languages, *selected, never assumed.*



## Cultural Luxury

OPULENCE · CRAFT · LAYERING · IDENTITY

Traditional elements reinterpreted in a refined, high-end way.



## Indian Traditional

CRAFT · HERITAGE · DETAIL · CULTURAL DEPTH

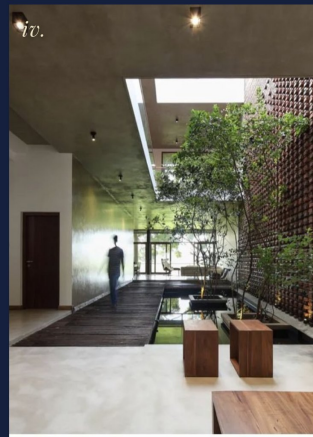
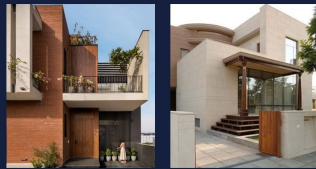
Rooted in regional identity. Celebrating craftsmanship, ornamentation and material richness.



## Indian Modern

RESTRAINT · WARMTH · SIMPLICITY · CONTEXT

A refined reinterpretation of Indian elements in a contemporary language.



## Courtyard

LIGHT · PRIVACY · VENTILATION · CENTRALITY

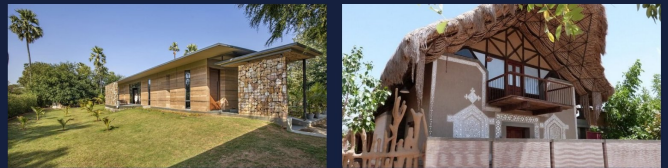
Spatial planning around internal open spaces — for climate, and for experience.



## Vernacular

CONTEXT · CLIMATE · MATERIAL · TRADITION

Local materials and time-tested techniques, in dialogue with the environment. Designed where it stands.



CONTINUED · THE OTHER FIVE

# From *climate* to *computation*.

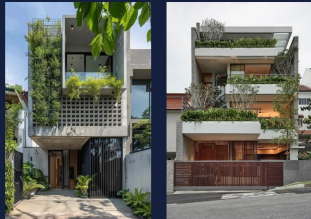
Performance, environment, and form. The vocabulary widens — sustainability, biophilia, the disciplined modernist, the parametric, and the light-filled enclosure. Each is chosen for the family and the land it serves.



## Sustainable

EFFICIENCY · LONGEVITY · RESPONSIBILITY · PERFORMANCE

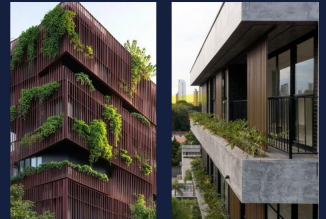
Environmentally conscious design measured in long-term performance, not optics.



## Biophilic

NATURE · WELLBEING · SENSORY · CONNECTION

Strengthening the human-nature relationship through the design itself.



## Modern Contemporary

REFINEMENT · SCALE · MATERIAL · EXPERIENCE

High-end spaces defined by material richness and spatial quality.



## Parametric

ALGORITHM · FLUIDITY · PRECISION · INNOVATION

Computational design enabling complex, dynamic forms with millimetric control.



## Green House

TRANSPARENCY · LIGHT · GROWTH · ENVIRONMENT

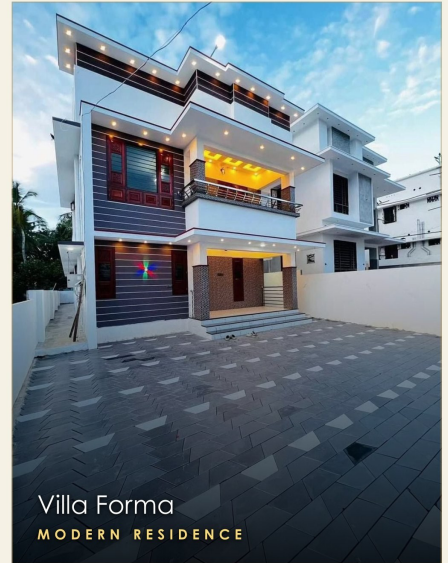
Light-filled environments integrating plant life and climate control — where architecture and garden become one continuous breath.



— A PORTRAIT GALLERY —

# Houses that belong to *their* land.

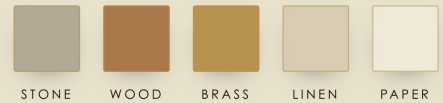
A glance across recent commissions. Each begun as a question about site, light, and how a family wished to move through their days. Identities withheld at the owners' request.



— A HOUSE MADE OF  
HONEST THINGS —

# Stone, wood, brass, linen, *paper.*

*Materials chosen for their honesty, not their finish sheet. A material evaluation matrix runs underneath every selection — durability, finish consistency, availability, maintenance, ageing.*



## — RESOLVED JUNCTIONS —

- i.* JOINERY PRECISION  
Seamless edges, concealed systems, hardware integrated at the drawing stage.
- ii.* MATERIAL JUNCTIONS  
Resolved transitions across surfaces — stone to wood, wall to ceiling, metal to glass.
- iii.* INTEGRATED LIGHTING  
Layered, subtle, functional. Cove, task, ambient and accent designed as one composition.
- iv.* HARDWARE & FINISHES  
Refined, consistent, durable. Specified to the model number, sampled before site.

## — Lifecycle Performance —

*Decisions evaluated for ageing, wear, and maintenance cycles; details, junctions, and transitions fully defined at drawing stage before execution.*

INTERIOR PLUS · DESIGN VOCABULARY

# Seven ways a room can *speak*.

From restraint to ornament, fluent across seven design languages — informed by history, climate and material, and interpreted for the family who will live within.



## Modern Minimal

RESTRAINT · MATERIALITY · PROPORTION

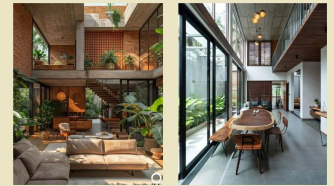
Materials and proportion define the space, rather than excess. A study in quiet.



## Tropical Modern

LIGHT · AIR · CONNECTION

Villas where architecture and landscape merge. Thresholds dissolved, air invited in.



## Indian Modern

RESTRAINT · WARMTH · SIMPLICITY

Indian elements reinterpreted in a refined, contemporary way. Never heavy.



## Indian Heritage

CRAFT · RICHNESS · LAYERING

Traditional elements reinterpreted with a refined hand. Craft, not pastiche.



## Neo-Classical Modern

SYMMETRY · ELEGANCE · REFINEMENT

For clients who want a sense of richness, controlled. Never overwhelming.



## Industrial Luxe

RAW · TEXTURAL · BOLD

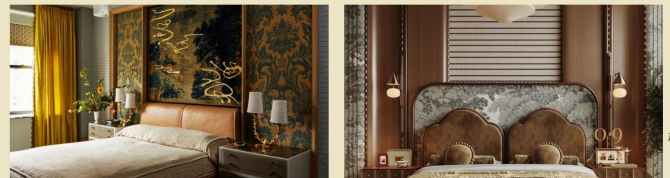
Raw materials balanced with warmth, so it never reads harsh. Only resolute.



## Art Deco Revival

GEOMETRY · CONTRAST · STATEMENT

Expressive interiors where form, pattern and contrast take centre stage. Brass, lacquer, mirrored geometry — controlled drama.



INSIDE THE HOUSE

# Rooms, composed like *still lives*.

Slow, considered, and built from the inside out. We let materials lead, and the room follows. Drawing rooms, principal suites, kitchens, joinery — each space resolved on paper, mocked-up in person, then handed over with a bound monograph of the home.

- i.* DRAWING ROOMS & SALONS  
Sculptural lighting, layered seating, anchored on slab marble walls.

---

- ii.* DISPLAY & JOINERY  
Bespoke shelving, statement cabinetry, and stone backdrops as quiet protagonists.

---

- iii.* PRINCIPAL SUITES  
Fluted timber headboards, cove lighting, layered linens and a private dressing alcove.

---

- iv.* LIVING & FAMILY ROOMS  
Sculpted sofas, low coffee tables and chandeliers that draw the room together.

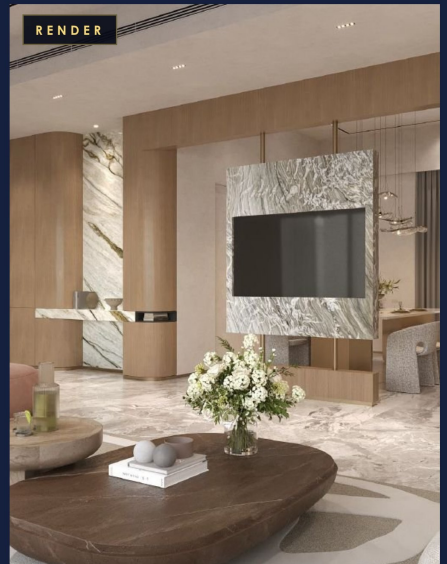
RENDER VS REALITY



— delivered —



— delivered —



— delivered —



FROM VISION TO KEY

# Nine chapters, one unbroken *thread.*

An HOH Luxe commission moves through a single, unbroken thread — design, construction, interiors and finishing, all held by one team. Nine chapters carry the home from the first private consultation to the final reveal and its bound monograph.

01

## PRE-DESIGN ALIGNMENT

Private consultation and a written codex of the home to come — rooms, rituals, references.

02

## SURVEYING & SITE ANALYSIS

Topography, sun path, wind, soil and neighbourhood read in full.

03

## CONCEPT DEVELOPMENT

Plans, sections, models and renderings developed in parallel with MEP and interior strategy.

04

## DESIGN DEVELOPMENT

Buildability-led refinement. Drawings evolve alongside construction feasibility.

05

## LIAISONING & APPROVALS

Permits, sanctions and statutory clearances handled in-house. The client never carries a paper.

06

## TECHNICAL RESOLUTION

Junctions, materials and hardware resolved on paper, then proven through mockups.

07

## CONSTRUCTION EXECUTION

Civil works under one site lead. Stage-wise quality checkpoints at every layer.

08

## INTERIOR EXECUTION

Joinery, lighting, finishes and soft furnishings — installed with precision.

09

## STYLING & HANDOVER

Art, soft styling, the final reveal — handed over with a bound monograph of the home.

— SERVICE AS LUXURY —

# *An audience,* not a meeting.

*A dedicated design manager. Real-time coordination. Site quality monitoring. A white-glove client experience — every HOH Luxe commission begins with a single, unhurried meeting.*

